

# Building Chemical Supplies

(Australia) Pty Ltd

is a leading supplier for **water proofing, concrete repair and coating systems**.

With a range of approximately **2500 products** we provide the best **solutions** to most **problems in the construction industry**. Just **contact us** on the details provided below and our technicians and engineers will work on a solution with you.



DISTRIBUTION  
EQUIPMENT  
CIVIL  
RAIL

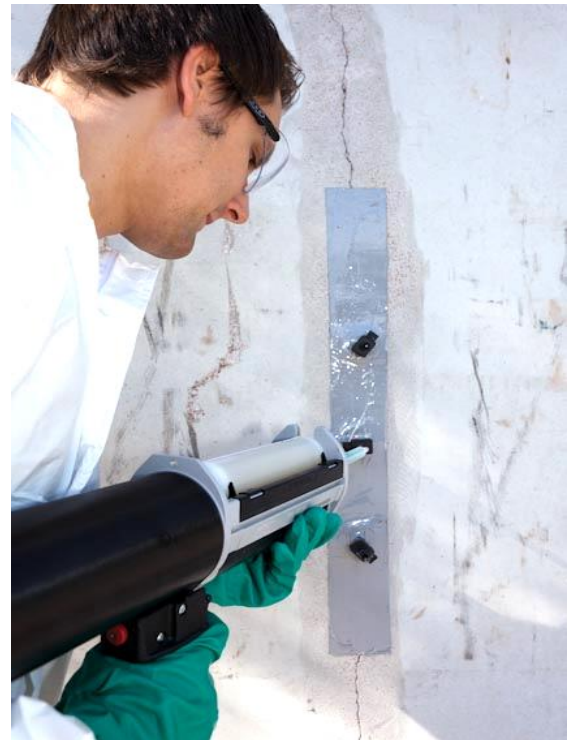
## MC-Fastpack System



Professional injection made easy!

### Why use the MC-Fastpack System?

- Ready-to-use system, no separate mixing of material, pre-set mixing ratio
- No material wastage through mixing up too much material, cleaning the pump etc.
- No additional cleaning of pump and equipment, no thinners involved
- No additional waste disposal of liquid waste or reacted materials
- Ensures always the optimal viscosity as mixing occurs just before injection
- Lower purchase cost compared to pumps
- No maintenance required
- One-man injection job, only minimum training required
- Easy to control injected amount of material
- Safe contained system protects humans and environment due to lower injection pressures (max.6 bar) and no open liquids or thinners



## Cartridge Materials for MC-Fastpack Power-Tool

### Force transmitting and sealing of cracks

#### MC-Fastpack 1264 compact

##### Product properties

- Low-viscosity, epoxy-based duromer resin
- High penetration activity
- Short reaction time
- As well hardening under dynamic conditions
- High compressive and tensile strength
- Moisture compatible

##### Areas of application

- Rigid filling of cracks, joints and voids in building construction, civil and underground engineering under dry and damp conditions
- REACh-assessed exposure scenarios: periodical water-contact, periodical inhalation



## **MC-Fastpack 2700**

### **Product properties**

- Low-viscosity, polyurethane-based duromer resin
- Short reaction time
- Semi-rigid when cured
- Limited foaming when reactive resin is mixed with water
- Certified for potable water
- Fulfils requirements of DIBt bulletin "Evaluation and effects of construction products on soil and ground water" (11/2000)

### **Areas of application**

- Sealing and stabilising of cracks and cavities in loose rock, mountain rock and similar areas
- Sealing of sheet pilings, diaphragm walls and the like on ground water levels
- Sealing of leakage in drinking water structures, pipe sockets, etc.
- REACh-assessed exposure scenarios: long-term water-contact, periodical inhalation



## **Flexible sealing of cracks**

## **MC-Fastpack 2300 plus**

### **Product properties**

- Low-viscosity, polyurethane-based elastomer resin
- Flexible sealing
- Accelerated reaction in contact with water with limited increase in volume
- Certified for potable water
- Classified as non-flammable
- High flexibility also at low temperatures

### **Areas of application**

- Flexible sealing and filling of cracks, joints and voids in building construction, underground and civil engineering under dry and water-bearing conditions
- Sealing of potable water structures
- REACh-assessed exposure scenarios: long-term water contact (crack), periodical inhalation



## **Temporary waterstop for cracks**

## **MC-Fastpack 2033**

### **Product properties**

- Low-viscosity, polyurethane-based elastomer resin
- Stops pressurised water
- Fast reaction with high increase of volume
- Certified for potable water

### **Areas of applications**

- Sealing of heavy water bearing cracks before secondary sealing with MC-elastomer resins or permanent caulking system
- Stops water leakage
- Filling of voids
- REACh-assessed exposure scenarios: long-term water contact (crack), periodical inhalation



# Adhesive and sealing of cracks

## MC-Fastpack PU solid

### Product properties

- Paste like, rigid polyurethane resin
- Hand application by the MC-Fastpack Power-Tool
- Applicable on slightly damp surfaces
- Applicable by spatula
- Crack bridging
- Fast hardening
- High compressive and tensile strength
- Good adhesion on mineral and metallic surfaces

### Areas of application

- Bonding of mineral and metallic building materials
- Glueing of adhesion packers (e.g. MC-Surfacepacker LP) for injection
- Sealing of cracks and leakages on injection job sites
- Filling and levelling of drill holes
- Small area coating repairs
- REACh-assessed exposure scenarios: periodical water-contact, periodical inhalation



## Packer systems for MC-Fastpack

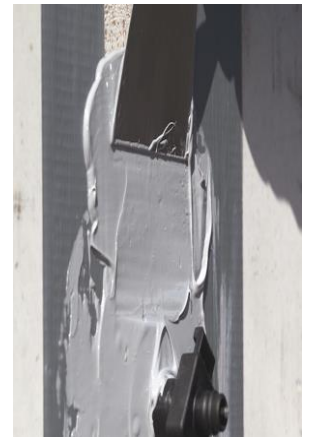
### MC-Surfacepacker LP

- Ø 50 mm
- cross sliding valve
- quick-release coupling
- Max. Injection pressure approx. 30 bar



### MC-Hammerpacker LP

- Ø 14 mm x 95 mm
- Integrated valve
- Max. Injection pressure approx. 50 bar



## COMPACT, FAST, SAFE

Building Chemical Supplies (Australia) Pty Ltd

286 New Cleveland Road, Tingalpa QLD 4173

P: (07) 3890 8306 • Fax: (07) 3890 8312

[www.bcsaustralia.com](http://www.bcsaustralia.com)  
[sales@bcsaustralia.com](mailto:sales@bcsaustralia.com)

